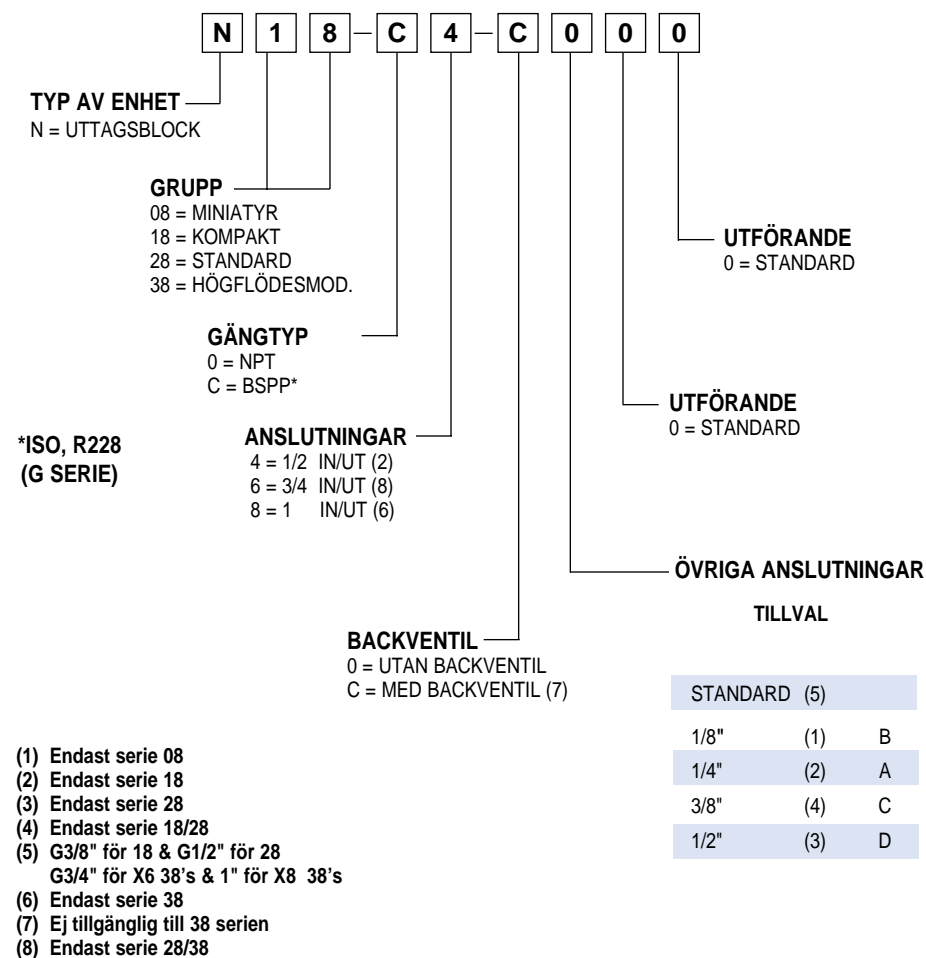
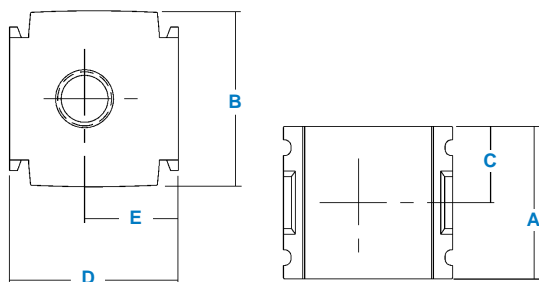


Uttagsblock: Kodnyckel



Uttagsblock N08



Specifikationer

Flöde*	G1/4 utan backventil	62,7 NI/s
	G1/4 med backventil	24,7 NI/s
Max arbetstemperatur		79°C
Max primärtryck		21 bar
Anslutning		G1/4
Uttagsanslutning (2)		G1/8, G1/4
Vikt	gram	2100

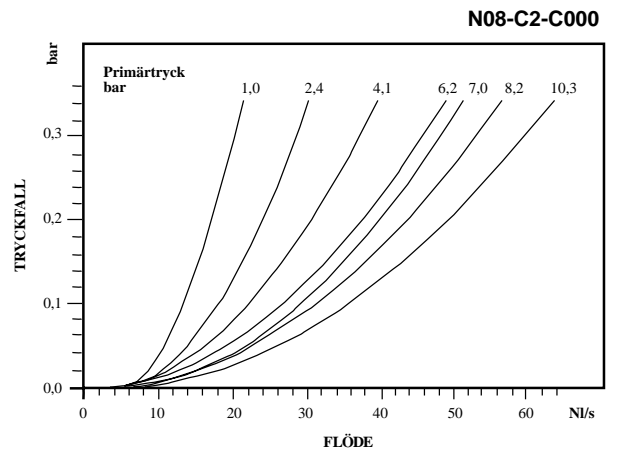
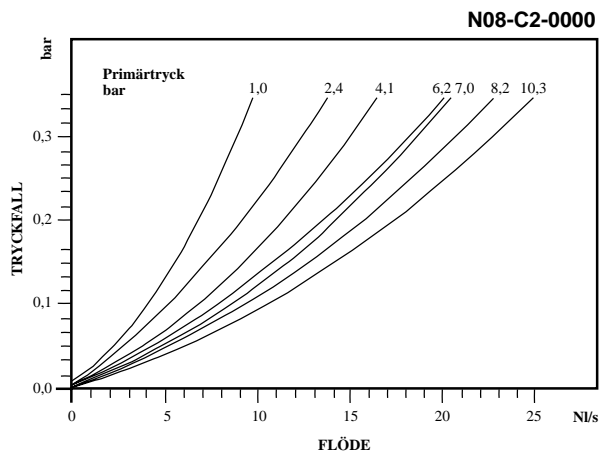
*Primärtryck 10 bar. Tryckfall 0,3 bar.

Material

Hus	Aluminium
Backventil	Nitril

Dimensioner

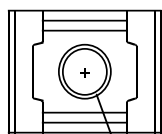
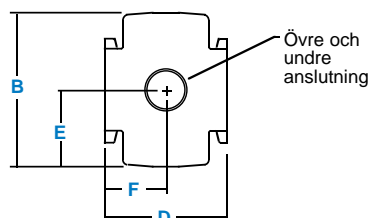
Modeller	A	B	C	D	E
Standard N08-XX-0000	48	60	24	48	30
Med backventil N08-XX-C000	48	60	24	48	30



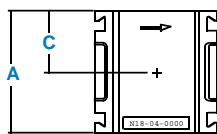
Beställningsinformation

Modell	Anslutningar	Uttagsanslutningar	Med backventil	Utan backventil
N08	—	1/8	N08-01-C000	N08-01-0000
	1/4	1/4	N08-C2-C000	N08-C2-0000

Uttagsblock N18/N28



Inlopp och utlopp



Specifikationer

Flöde*	N18 G1/2 N28 G3/4	189 NI/s 305 NI/s
Max arbetstemperatur	79°C	
Max primärtryck	21 bar	
Anslutningar	N18, G1/2/N28, G3/4	
Uttagsanslutning (2)	N18, G3/8/N28, G1/2	
Vikt	gram	N18, 346 N28, 1080

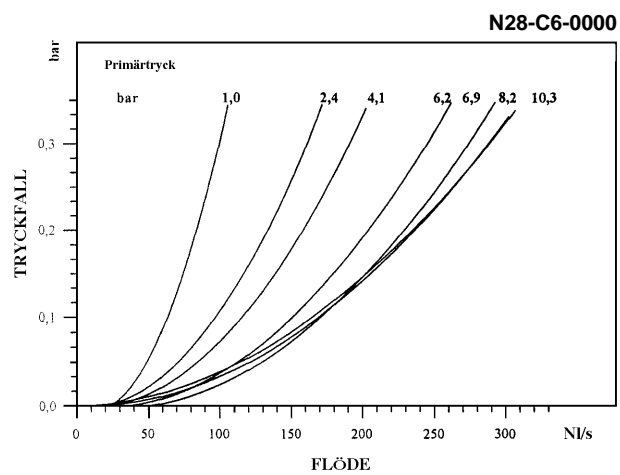
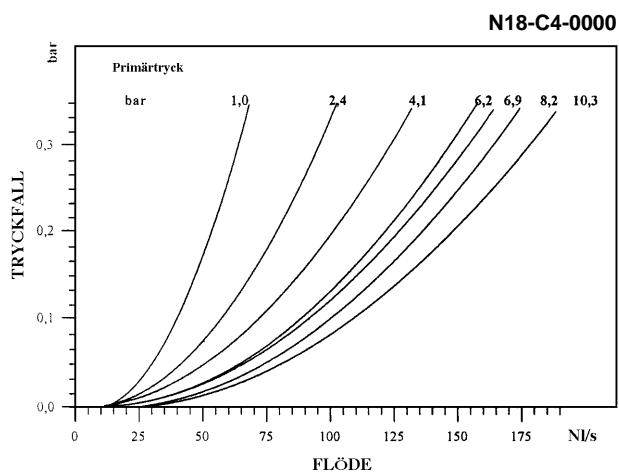
*Primärtryck 10 bar Tryckfall 0,3 bar.

Material

Hus	Aluminium
Backventil	Nitril

Dimensioner

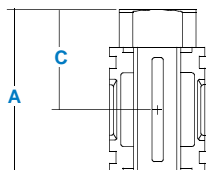
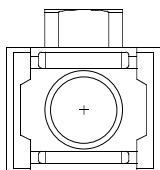
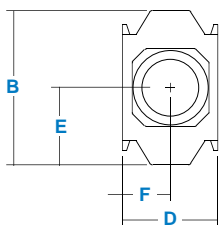
Modeller	mm	A	B	C	D	E	F
Standard N18-XX-0000		48	60	24	48	30	24
Med backventil N18-XX-C000		48	60	24	60	30	24
Standard N28-XX-0000		48	73	24	66	36.5	33
Med backventil N28-XX-C000		48	73	24	73	36.5	33



Beställningsinformation

Utförande	Anslutningar	Med backventil	Utan backventil
N18	G1/2	N18-C4-C000	N18-C4-0000
N28	G3/4	N28-C6-C000	N28-C6-0000

Uttagsblock N38



Specifikationer

Flöde*	330 NI/s
Max arbetstemperatur	79°C
Max primärtryck	19 bar
Anslutningar	G3/4, G1
Uttagsanslutning (1)	G3/4, G1
Vikt	gram 410

*Primärtryck 10 bar Tryckfall 0,3 bar.

Material

Hus	Aluminium
-----	-----------

Dimensioner

Modeller	mm	A	B	C	D	E	F
Standard N38-XX-0000		86	81	52.5	50	40	25