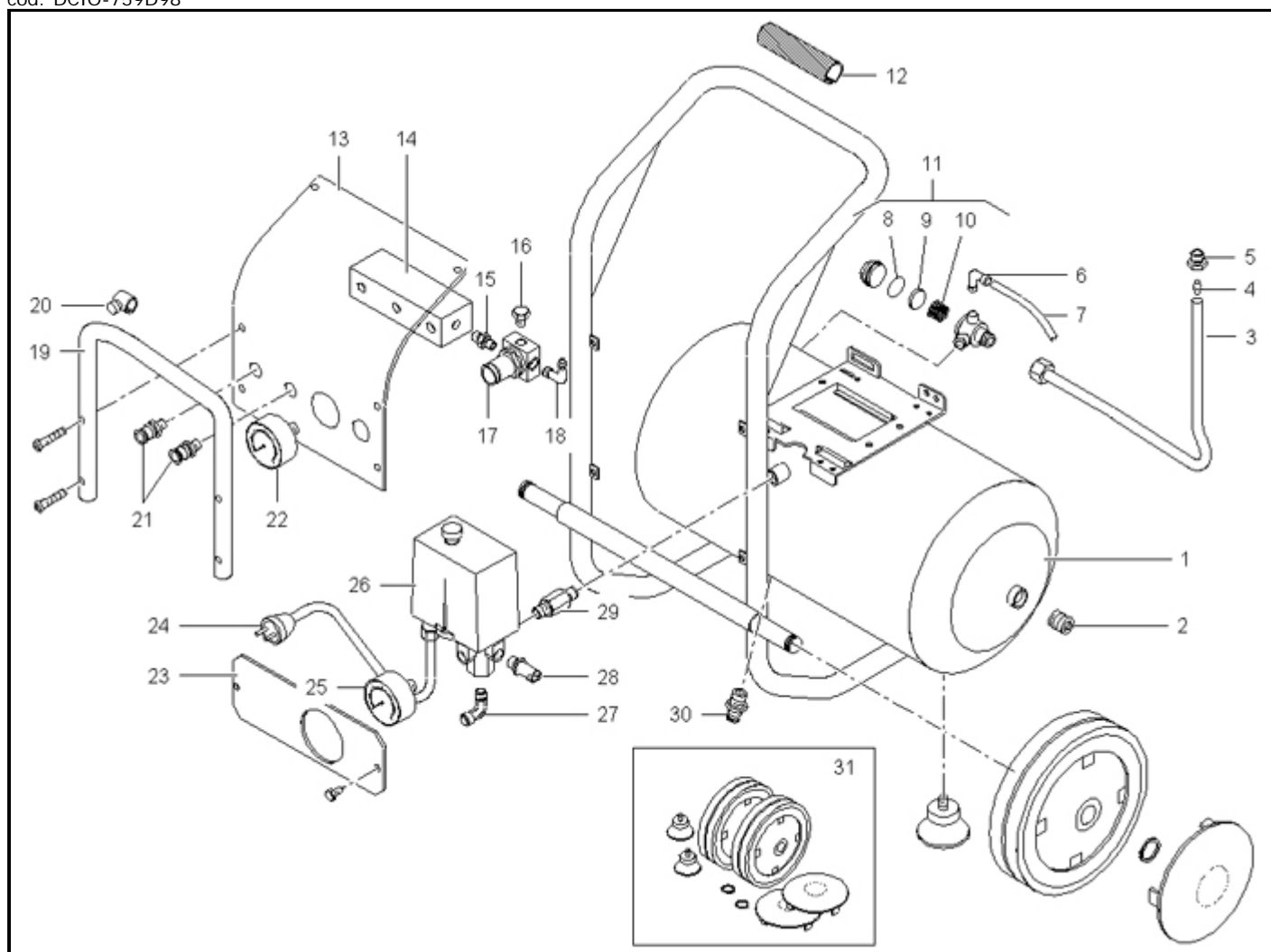




BIG PIONEER 285M (602NC1A605)

cod: DCIO-759D98



cod: 002

| Ref. | Code | Descr. | Quantity Advised | |
|------|------------|--|------------------|---|
| 1 | 166CN0010V | TANK L20 BP | 1 | - |
| 2 | 111008000 | PLUG R1/2 DRISEAL LOC 2040 | 2 | - |
| 3 | 102CN0001 | DELIVERY TUBE BIG PIONEER 265-285 | 1 | 2 |
| 4 | 161535012 | NOSE CONE 10/8 | 1 | 2 |
| 5 | 116HP0011 | LOCK NUT OL185 | 1 | - |
| 6 | 011055000 | L-SHAPED END COUPLING G1/8X6 | 1 | - |
| 7 | 046001000 | RILSAN HOSE | 1 | - |
| 8 | F99357000 | OR 2068 NBR 70°SH | 1 | - |
| 9 | 047129002 | | 1 | 8 |
| 10 | 047113002 | TAPERED SPRING FOR NON-RETURN VALVE G1/2 | 1 | - |
| 11 | 347092000 | CHECK VALVE 3/8X3/8MM | 1 | 1 |
| 12 | 116022015 | HAND GRIP - PIONEER | 2 | - |
| 13 | 102NC0004V | ACCESSORIES PLATE BIG PIONEER 285 | 1 | - |
| 14 | 102NC0003 | WYE FITTING BIG PIONEER 285 | 1 | 1 |
| 15 | 011017000 | NIPPLE GC1/4X1/4 BRASS | 1 | - |
| 16 | 111001000 | PLUG R1/4 DRISEAL 506 | 1 | - |
| 17 | 319057000 | PRESSURE REDUCER MW MR BIT 1/4 012 | 1 | - |
| 18 | 011212000 | L-SHAPED END COUPLING R1/4X6 | 1 | - |
| 19 | 102NC0002V | SUPPORT FOOT BIG PIONEER | 1 | - |
| 20 | 020201000 | VIBRATION DAMPER | 1 | 4 |

| | | | | |
|----|------------|--|---|---|
| 21 | 322030000 | QUICK TAP G1/4M ART. 22GAV | 2 | - |
| 22 | 330007000 | PRESSURE GAUGE 50-16/10 BAR-PSI REAR | 1 | 4 |
| 23 | 102NC0001V | PROTECTION BRACKET BIG PIONEER285 | 1 | - |
| 24 | 164A04400 | POWER CABLE 3X1,5 SCHUKO H05 RRF DIR.CE | 1 | - |
| 25 | 330007000 | PRESSURE GAUGE 50-16/10 BAR-PSI REAR | 1 | - |
| 26 | 321028000 | PRESSURE SWITCH 4115/2 NEMA/P 4 VIE 1/4C | 1 | 1 |
| 27 | 011000169 | L-FITTING M 1/4X6 | 1 | - |
| 28 | 047206000 | SAFETY VALVE .G1/4 T10 PED | 1 | - |
| 29 | 011080000 | NIPPLE GC1/4X3/8 | 1 | - |
| 30 | 122020000 | | 1 | - |
| 31 | 402CN0010 | COMPLETE WHEELS KIT | 1 | 6 |