



Tipo **Traino cinghia**
Type **Belt driven**

Modello
Model

MK 103

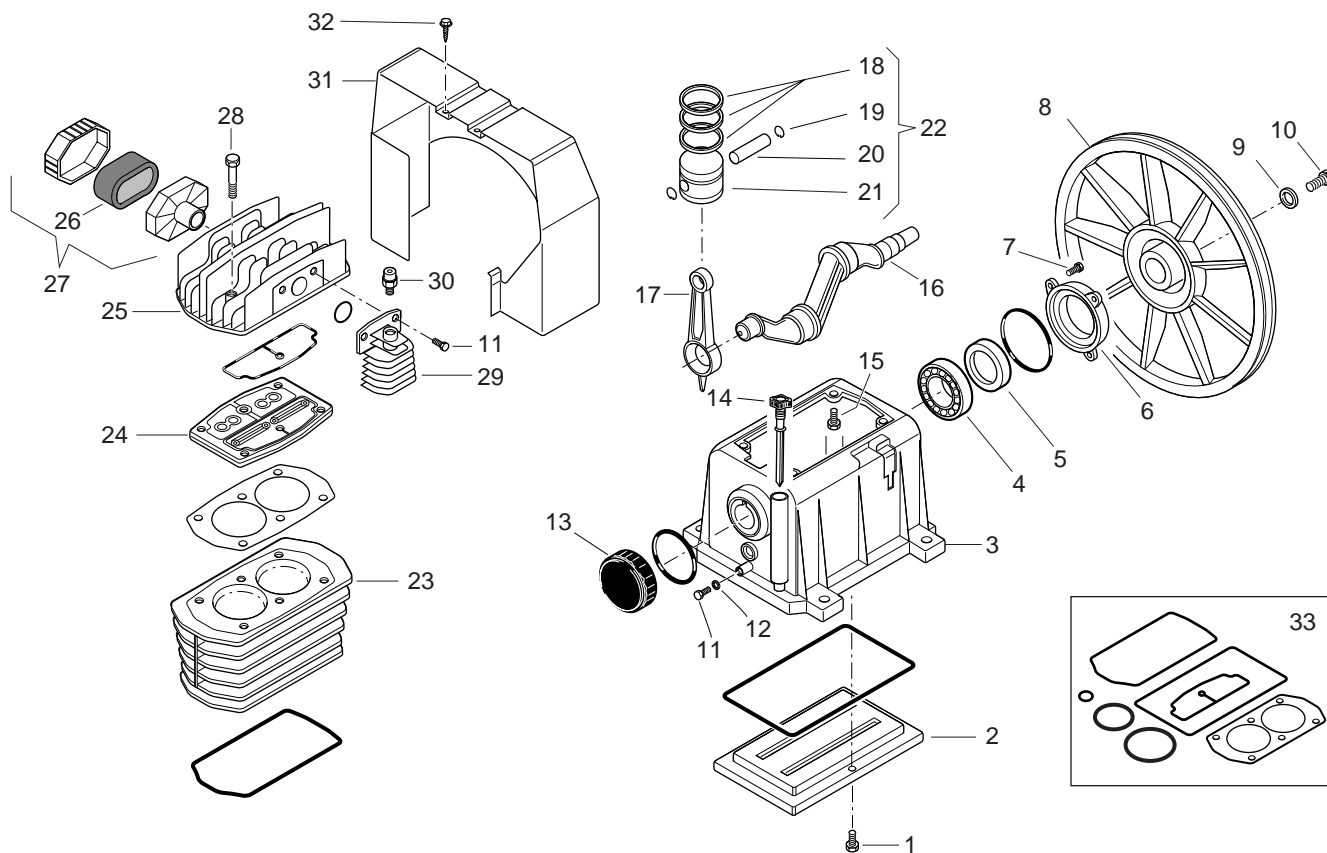
Litri
Litres -----

V/Hz/Ph

Codice
Code **5131670000**

Data
Date **Febbraio 2002**
February 2002

Revisione
Revision **02**



Rif.	Q.ta'	Codice	* Denominazione	
Ref.	Q.ty	Code	Denomination	
1	6	014013054	VTE M5X12 TAP-TITE	SCREW
2	1	113149015	COPERCHIO INFERIORE CARTER	LOWER COVER
3	1	113167001	CARTER	CASING
4	1	033027000	CUSCINETTO 6205	BEARING
5	1	010053000	ANELLO DI TENUTA 2535/7	SEAL
6	1	113149008	COPERCHIO ANTERIORE	FRONT COVER
7	3	014013021	VTE M6X20 TAP-TITE	SCREW
8	1	013160010	VOLANO	FLYWHEEL
9	1	014005001	RONDELLA 9X36X4	WASHER
10	1	113160011	VTE M8SINISTRAX18	SCREW
11	3	014013082	VTE M8X20 TAP-TITE	SCREW
12	1	014005025	RONDELLA 8X12X1	WASHER
13	1	113149009	COPERCHIO POSTERIORE	REAR COVER
14	1	012036000	ASTA OLIO	OIL DIPSTICK
15	4	014010044	VTE M8X25	SCREW
16	1	113167003	ALBERO A GOMITO	CRANKSHAFT
17	1	113150004	4 BIELLA	CONNECTING ROD
18	2	213167001	8 KIT SEGMENTI	PISTON RING KIT
19	4	015023000	ANELLO FERMA SPINOTTO 17	CIRCLIP
20	2	116025006	SPINOTTO 17X50	GUDGEON PIN
21	2	113164009	PISTONE 65	PISTON Ø65
22	2	413167006	4 PISTONE COMPLETO	COMPLETE PISTON
23	1	113167002	CILINDRO	CYLINDER
24	1	413167005	PIASTRA PORTAVALVOLE CPL.	VALVE HOLDER PLATE
25	1	113150022	TESTA	HEAD
26	1	017003000	12 ELEMENTO FILTRANTE	FILTER CARTRIDGE
27	1	317001000	4 FILTRO ASPIRAZIONE	INTAKE FILTER
28	6	014002041	VTE M8X50	SCREW

* Ricambi consigliati in percentuale - Suggested parts in percentage

Rif.	Q.ta'	Codice	*	Denominazione	
Ref.	Q.ty	Code		Denomination	
29	1	116091024		COLLETORE	MANIFOLD
30	1	011158000	2	VALV.AUT0M.SCARICO G1/4-T2,2	AUTOMATIC DISCHARGE VALVE
31	1	113150002		CONVOGLIATORE (non incluso)	CONVEYOR (not included)
32	1	014006121		VTE 4,2X13 (non incluso)	SCREW (not included)
33	1	213167002	6	KIT GUARNIZIONI	SEAL KIT